



A Guide to Botanical trails
Kullaberg Nature Reserve

GENERAL INFORMATION

This guide offers an interesting choice of **six short circular paths**, or loops, for hikers. These six loops range from 2 km to 3 km in length, and incorporate a variety of different landscapes, from wetlands to pastures, and even a golf course. Most of these circular paths are concentrated in the less-visited **eastern part** of the nature reserve, offering some hidden magical landscapes. These areas provide a wide range of habitats and scenery.

There are immense forest landscapes, including beech forest, wooded valleys and forest ponds. Scattered through the forest are open landscapes (meadows, pastures, crop fields and coastal scenes). Other features suggest heritage delineation marks that were used to separate different areas, such as stone walls, banks, hedges and ditches. Throughout these diverse landscapes, we find a wide variety of plants: rare, common, edible, and bee-friendly. The focus of this guide is to **highlight the plants**, in particular the edible plants and bee-friendly plants (non-exhaustive list), that grow along these paths.

Remember that in a nature reserve you are not allowed to collect, eat or dig up the plants. You are only allowed to look and enjoy the nature.

These loops give walkers the opportunity of becoming more aware of edible plants and of plants that are friendly to **bees** and to other pollinating insects, and to identify these plants more easily. Around the world, there is increasing concern about the decline of bee populations, as well as a decline in overall insect populations. Here at Kullaberg, we find various species of pollinators (solitary bees, bumble-bees, butterflies, and dragonflies...). These pollinators are vital not only for the nature reserve, but also for the surrounding agriculture. The edge between the forested areas and the fields is a vital biodiverse habitat, hosting a wide variety of fauna and flora that is important to preserve.

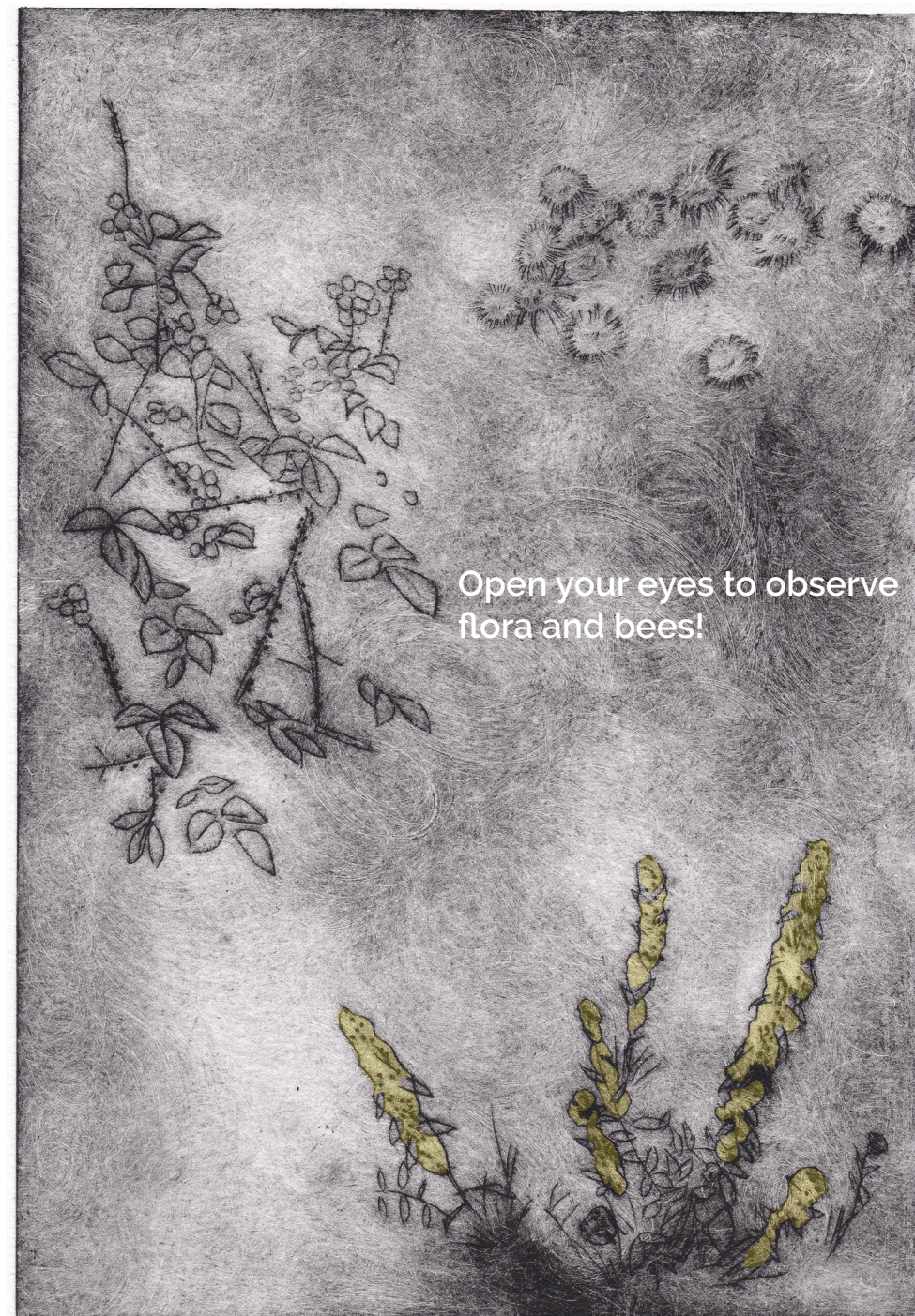
Along the paths, there are some **wonderful views** across the overall landscape. Please note that the loops suggested in this leaflet follow existing trails: take a look at the maps. The trails are marked as red, blue, yellow (the principal trails of the nature reserve) or orange (Kullaladen trail). On the maps, the loops are marked as **colourful lines**. The level of difficulty of these suggested loops varies between easy and intermediate level.

Enjoy magical nature through these beautiful trails!

This printed guide, including all graphic visuals and etchings, has been designed by landscape architect Rose-marie Bugeaud.

Laura Martin and Olivia Rasmussen elaborated the cartography and graphic design of the maps.

The etchings were created at David Delesalle's etching workshop in France. 2



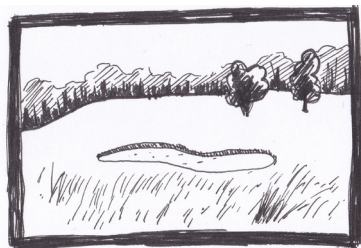
Open your eyes to observe
flora and bees!

Notice: Please do not pick any plants in the nature reserve. Enjoy with your eyes!

GOLF COURSE LOOP

Landscape and botanical trail - 2.8 km
level: easy

stone walls, open landscape, meadows, pastures, edges of the forest, banks



This loop offers multiple views of open landscape and beautiful view point of Mölle and the sea. It provides an opportunity to see orchids, edible plants and to observe how the golf course is integrated into the reserve.

ORIENTATION

Starting point: golf course park

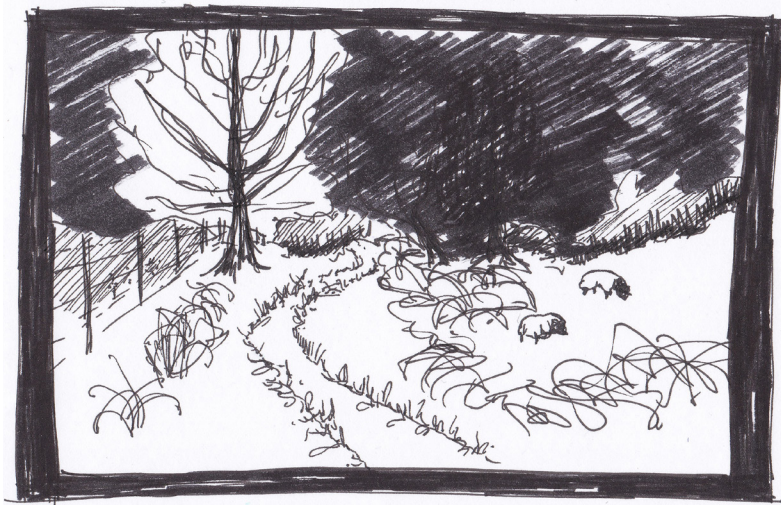
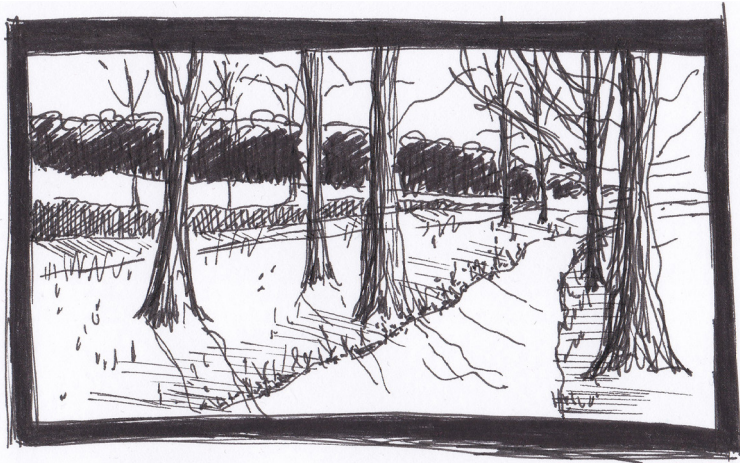
- 1- Follow the road, take the path through the golf course
- 2- Take the orange & red path
- 3- Take the sheep track
- 4- Take the orange & red path
- 5- Follow the edge of the golf course alongside the beech forest
- 6-Follow the path along the road



The integration of the golf course into the nature reserve offers a green open landscape bordered by forest. The edges of the golf course are rich in biodiversity. The golf course was created long before the nature reserve received formal classification as a protected area. The old stone walls along the roads and tracks and across the golf course remind us of pastoral activities that took place here in earlier times. The golf course is managed differently from the rest of the reserve, with frequent grass cuttings and vegetation management. This creates some conditions on the edge for a variety of plants to thrive (hedges, orchids...) and by integrating the ponds and reed beds that drain water from the golf course. Sheep are maintaining the openness of the landscape nearby.



GOLF COURSE LOOP



Paris quadrifolia



Orchis mascula



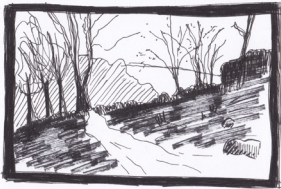
Anemone nemorosa

ONA MOSS LOOP

Landscape and botanical trail - 2.8 km

level: intermediate

pastures, beech forest, valley, wetland areas, pond



This loop offers a walk through a valley, a climb uphill rewarded by a view of the pastoral landscape around Ona moss, and a beautiful secret pond bordered by young birch trees.

ORIENTATION

Starting point: car park main western entrance

- 1- Take the path towards Djupadal
- 2- Turn to the right, orange path
- 3- Turn to the right along a narrow path
- 4- Turn right towards Mölle

Walking through the Djupadal ravine valley, passed attractive houses with gardens, we then walk into a shady beech forest (*Lunaria rediviva*, *Alnus glutinosa*, *Sorbus*, *Lonicera*...). On the steep slope towards Ona Moss, there is a pasture restoration project, where birch trees and bushes are being cleared for open pasture. Sheep or cows will keep this area open, to create the right conditions for a variety of flora. Further on there is a nice hidden view out onto Ona moss, with its small birch islands. The wetland surroundings are rich in biodiversity (*Vaccinium* spp.). In the pastures, there are attractive marshy areas (*Cirsium*, *Carex*), which change colour through the seasons. Crossing through a gate, we walk into a forest of pine trees, planted in rows, bordered by beautiful fungi in autumn.



ONA MOSS LOOP

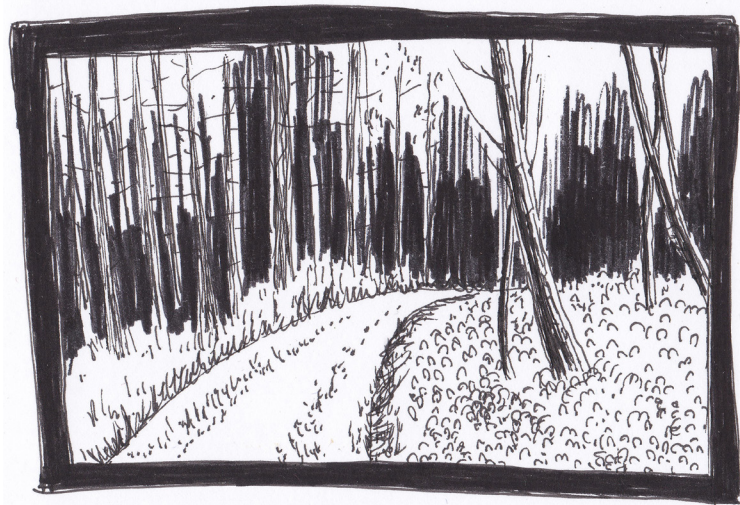
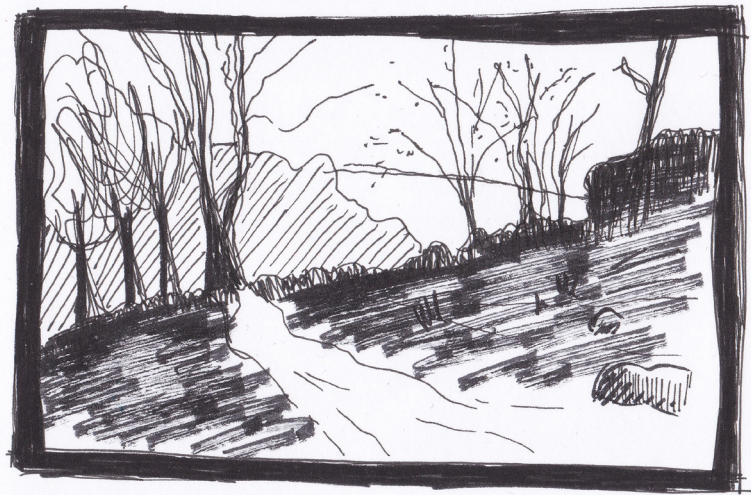
Starting point

1:5.000

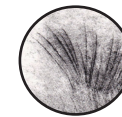
Digital Elevation Model © Lantmäteriet
Map graphics © NATURAMAP

100 0 100 m

ONA MOSS LOOP



Lunaria rediviva



Carex sp.



Vaccinium vitis-idaea

THE EDGE LOOP

Landscape and botanical trail - 3 km
level: intermediate

 crop field, beech forest, ditches, pastures



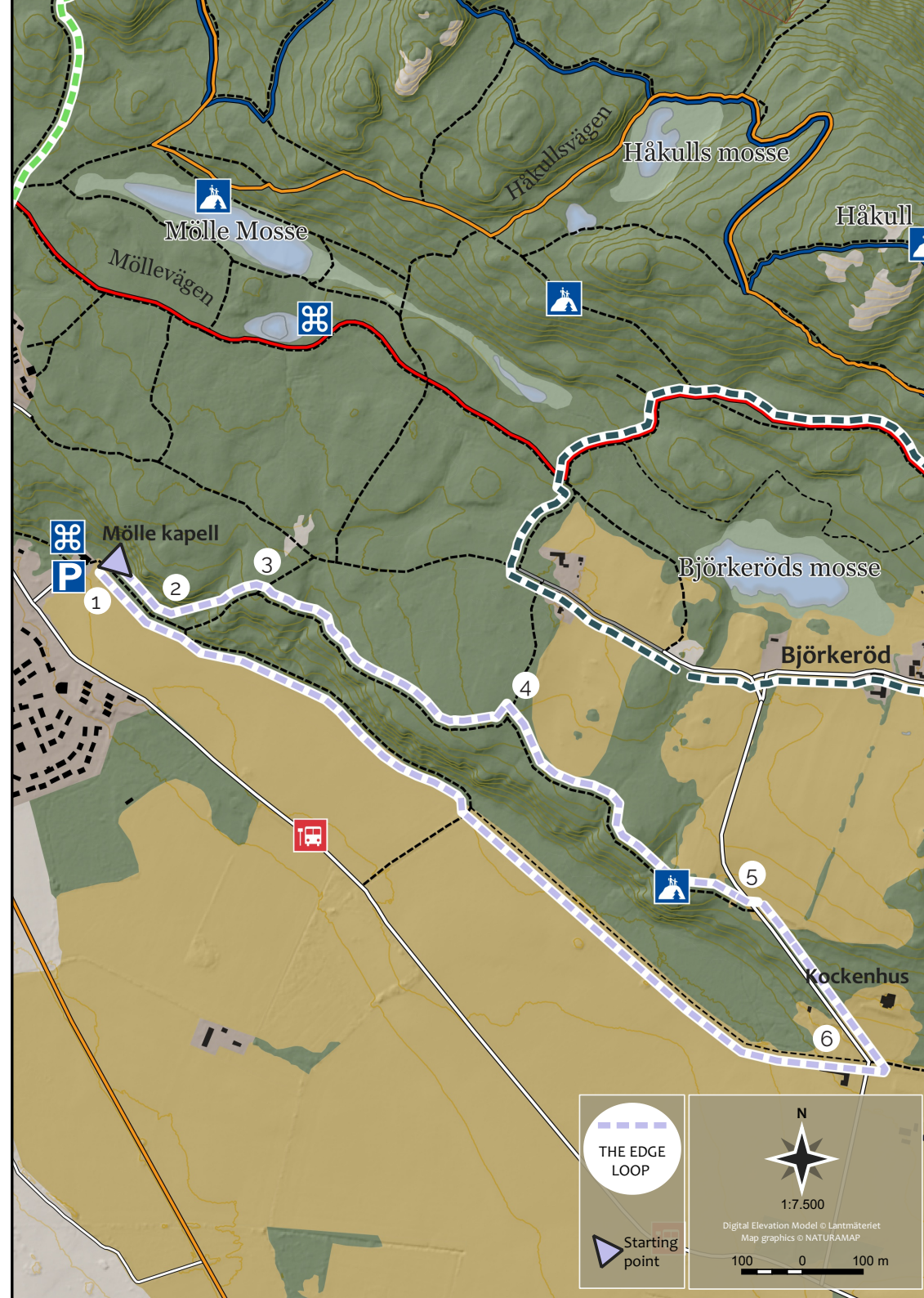
This loop takes us through a wonderful sloping beech forest and then follows the forest edge on one side, and the field on the other side, to observe the magic of biodiversity.

ORIENTATION

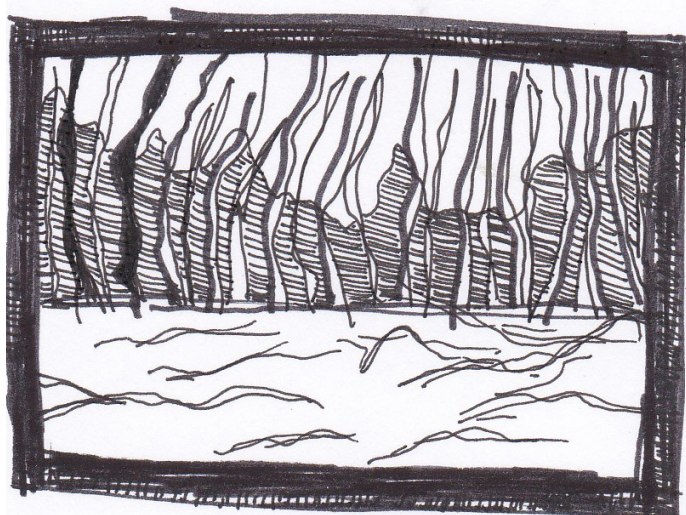
Starting point: car park entrance

- 1- Take the path behind Mölle church
- 2- Climb the slope in the beech forest
- 3- Turn right
- 4- Continue straight
- 5- Go down the road (Kockenhus)
- 6- Take the path following the edge of the field

From Mölle chapel, we walk high up, through the beech forest. A window opens onto the Björkeröd pastures, on the left of the path. Further along, there is a view of the wide landscape. Here we can see the fields bordering the Möllehässle nature reserve and look across to the coast and sea beyond. After Kockenhus, we turn to take the path following the edge of the forest, where many different plants (*Hepatica nobilis*, *Cichorium intybus*, *Rosa canina*, *Rubus*, *Malus*, *Prunus*...) are visible along the forest margins. The forest edge provides a buffer zone for biodiversity, from the ditch to the bushes and the forest strata, creating a refuge for bees, other insects, and birds as well as various plants. On the other side, field crops change every year: rape, wheat, barley, sugarbeet.



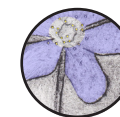
THE EDGE LOOP



Rosa canina



Linaria vulgaris

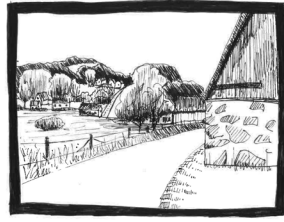
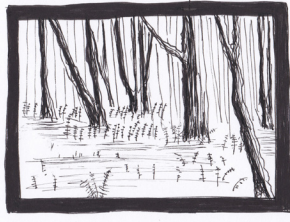
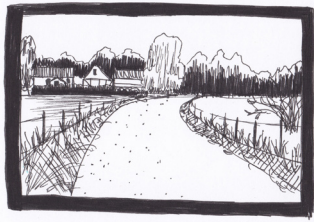


Hepatica nobilis

BJÖRKERÖD LOOP

Landscape and botanical trail - 2 km
level: easy

Pastures, arable fields, forest, hedges, wetland areas, pond



This loop takes the visitor through a fascinating discovery of wetland areas and the surroundings of Björkeröd moss, and beautiful pastoral scenery with meadows and hedges rich in edible plants and berries.

ORIENTATION

Starting point: car park entrance
1- Take the large path next to the car park

2- Turn right through the forest

3- Take the red path on the right
3b- Or take the narrow path towards the pond and across the meadow

4- Go down the path to the farm
5- Turn right by the farm, and back to the car park

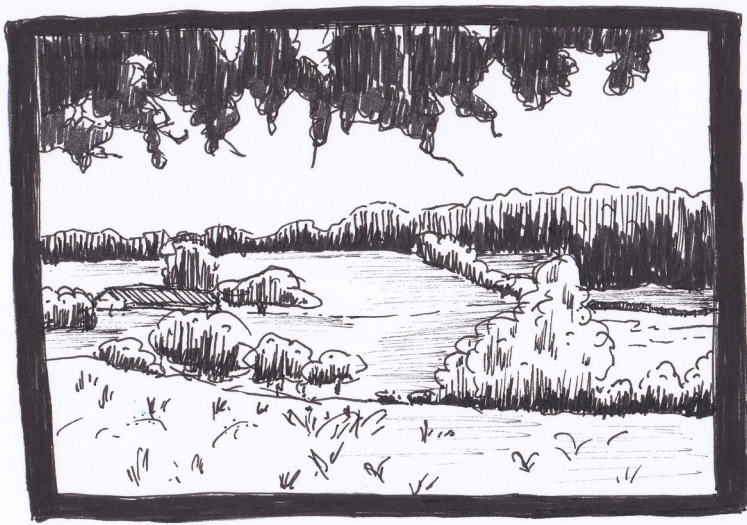


We start on a wide path, alongside the horse paddocks. We then enter a shady beech forest. Our **first option** takes us along a narrow path. We can observe a distinctive wetland forest area (ferns). This leads to a pond area bordered by Phragmites and other wetland plants. Walking uphill across the field towards the right-hand corner, we have a wonderful view of the countryside.

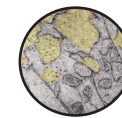
Our **second option** (red path) takes us through a forested area. Crossing stairs, we turn down to the right, under a beautiful arch of vegetation. In the hedgerows along the path, we can find trees (*Prunus spinosa*, *Coryllus avellana*...) and edible plants. We then pass some attractive old cottages with thatched roofs and farm buildings, and may see sheep and horses grazing in the surrounding pastures.



BJÖRKERÖD LOOP



Phragmites australis



Barbarea vulgaris

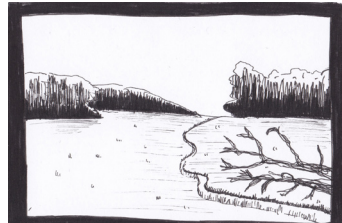
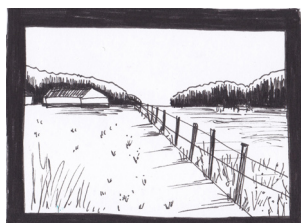


Dryopteris filix-mas

HIMMELSTORP LOOP

Landscape and botanical trail - 2.4 km
level: easy

Pastures, forest, cultural heritage, hedges



In this loop, we find diverse types of forest (birch, beech, coniferous), pastures, and large open landscapes of meadows scattered with majestic old oak trees (beautiful views).

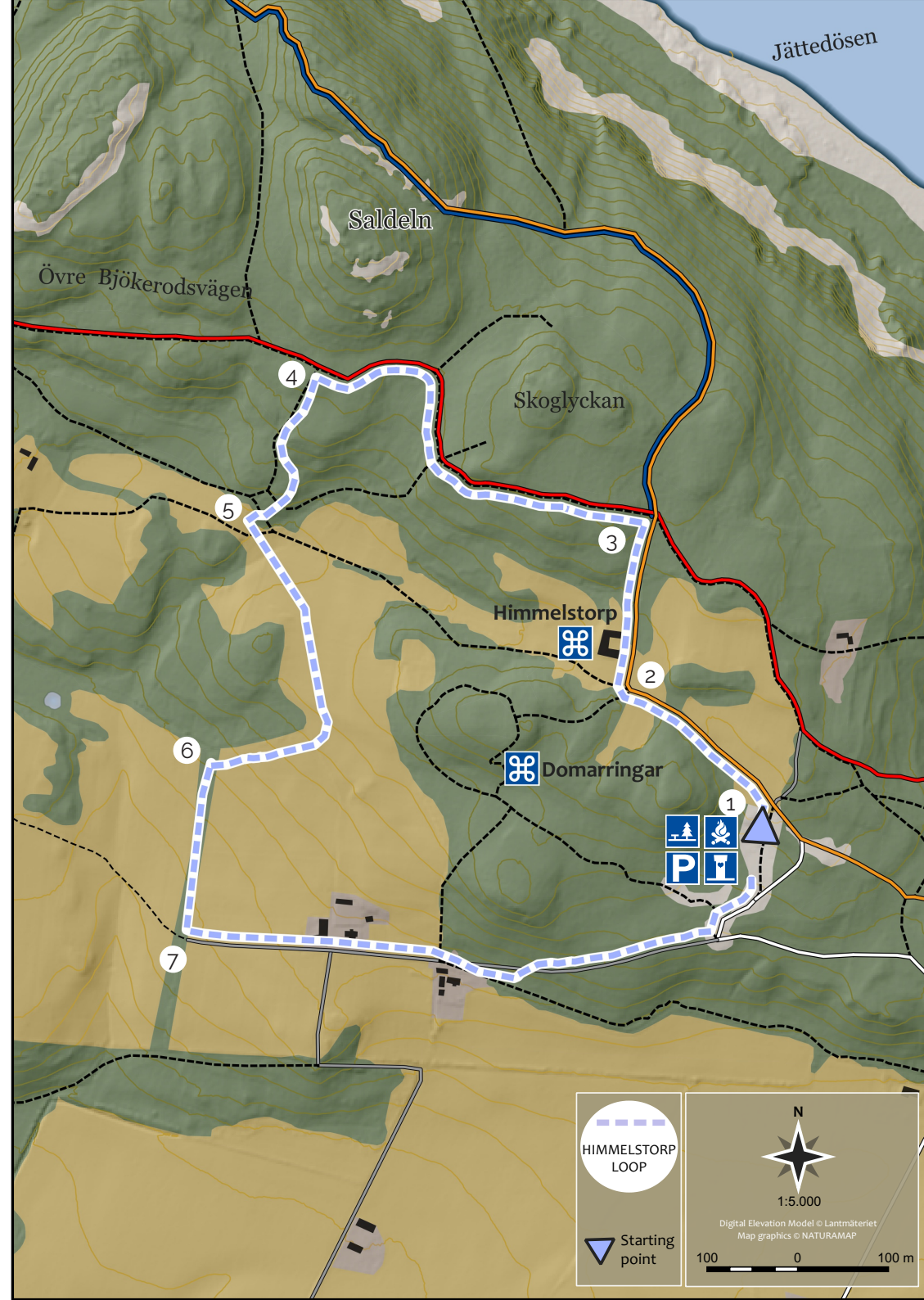
Orientation

Starting point: Himmelstorp car park

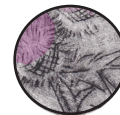
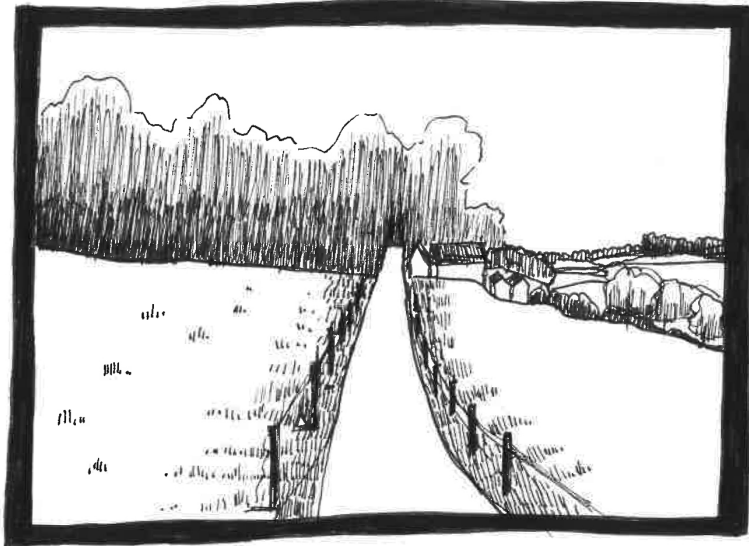
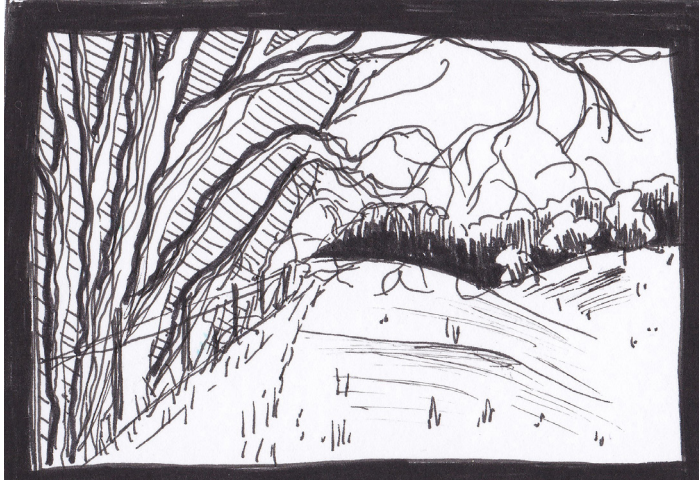
- 1- Take the stairs, follow the field, orange path
- 2- Cross Himmelstorp
- 3- Take the red path on the left
- 4- Take the second small path on the left
- 5- Cross the pastures through the cow track
- 6- Across the gap in the fence, follow the hedge
- 7- Across the fence and along by the farm



Following the edge of a horse paddock, and then walking through the old Himmelstorp farm, creates a pleasant start. Gradually, the beech trees give way to coniferous trees and birch trees. A young birch forest leads us to a beautiful pastoral landscape. Some of the fields host majestic old oak trees. By taking the cow track and crossing over the fence, we follow a hedge that is rich in edible trees (Sorbus, Prunus, Coryllus, Rubus...). After the hedge, we cross over the fence and walk along in front of the farm buildings. Here, there is a good view of the patchwork mosaic created by the agricultural landscape.



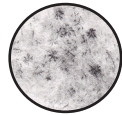
HIMMELSTORP LOOP



Cirsium vulgare



Vaccinium myrtillus



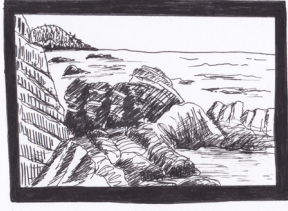
Stellaria holostea L.

ARILD PATH

Landscape and botanical trail - 3 km

level: intermediate

Pastures, forest, cultural heritage, coastal sceneries



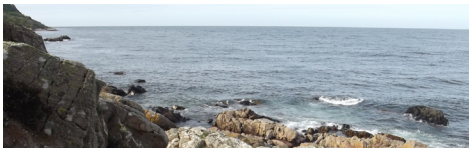
On this walk, you can experience a diversity of atmospheres: from the calm of the forest to the beautiful coast scenery (seaside flora) and across rich pastureland. Beautiful views on the way to the sea.

ORIENTATION

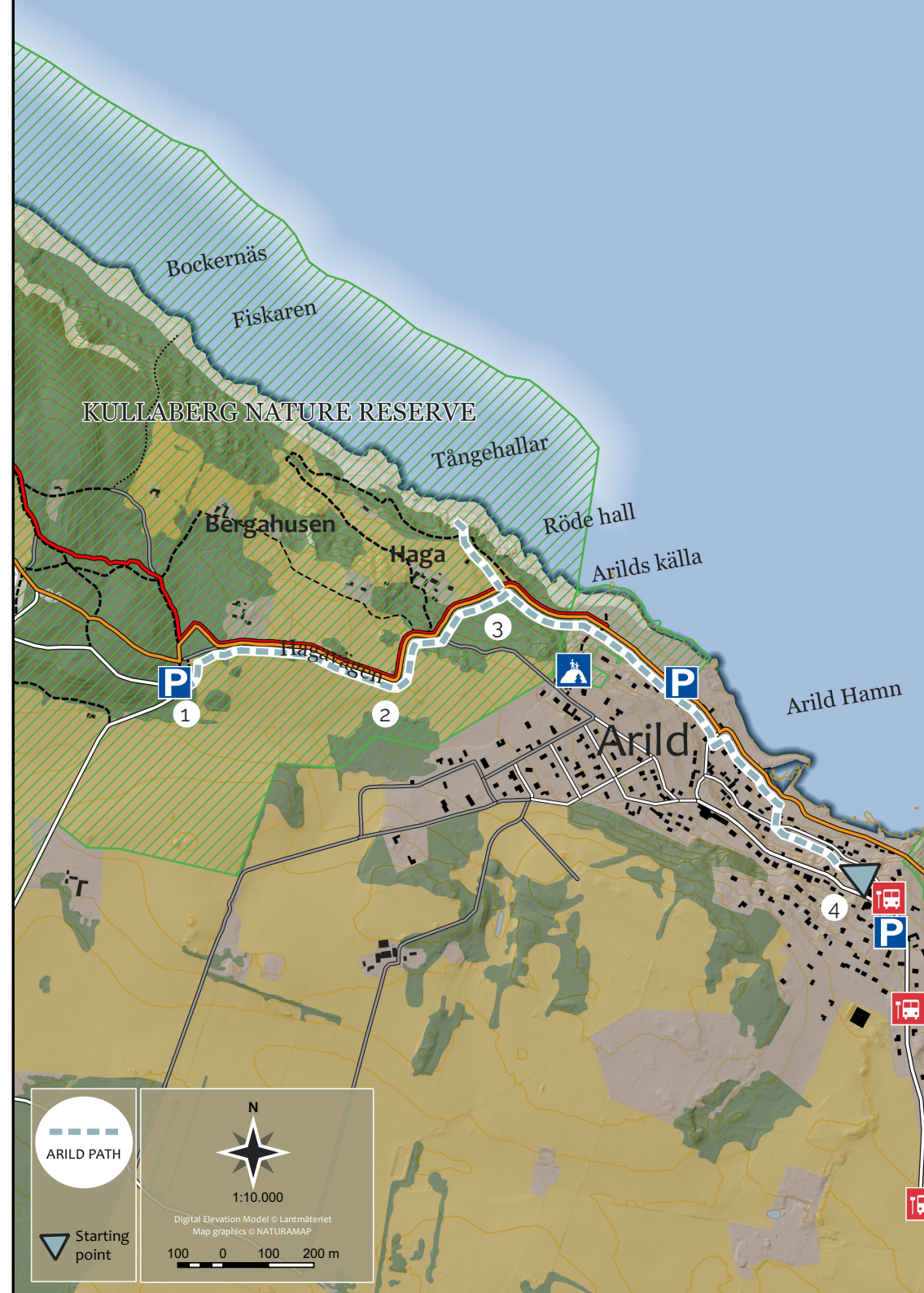
Starting point:
Himmelstorpsvägen car park
Or: Arild village car park entrance

- 1- From Himmelstorpsvägen, turn into a narrow path after the car park, orange trail
- 2- Turn left, down to the sea
- 3- Follow Saint Arild's Well

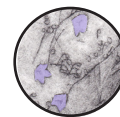
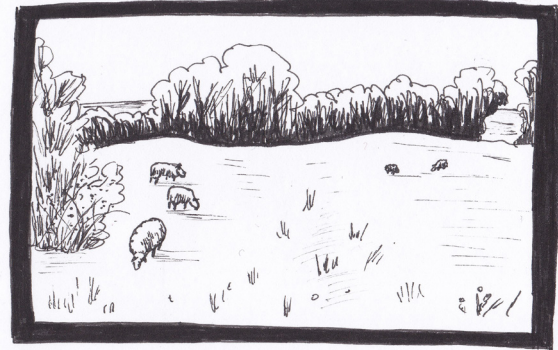
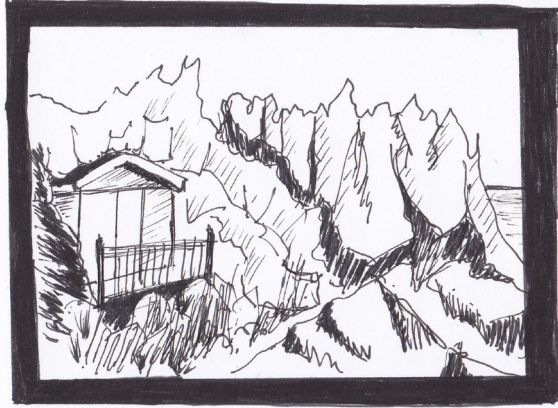
4- From Arild village, straight through the village to the sea, orange trail



Starting through the woodland at Himmelstorpsvägen, we cross a pastoral landscape with a few large trees scattered like islands in a green ocean. Sheep keep the landscape open. On the way, notice the great view of an old house and the sea. Turning left we walk under the arch of vegetation, down towards the coast. Approaching the rocks, we can find plants that thrive in coastal areas. We can also find Saint Arild's Well among the rocks. We take the same route back to the car park. Alternatively, setting out from Arild village car park, we take a straight path to the sea. We can appreciate this old artistic fishing village and the views of beautiful meadows. By the rocky coastline, we can enjoy seeing salt-resistant plants (*Armeria maritima*, *Campanula rotundifolia*...).



ARILD PATH



Campanula rotundifolia



Armeria maritima



Lamium album



- GOLF COURSE LOOP
- ONA MOSSE LOOP
- THE EDGE LOOP
- BJÖRKERÖD LOOP
- HIMMELSTORP LOOP
- ARILD PATH

N

1:25,000

Digital Elevation Model © Tomtekartet
Map graphics © NATURUM

100 0 100 200 m

- Naturum
- Café
- Parking
- Picnic area
- Sight
- Toilet facility
- View point
- Bus stop | Skånetrafiken

- Main southern trail
- Main northern trail
- Connection trails
- Skånelådan Trail
- Paths
- Roads